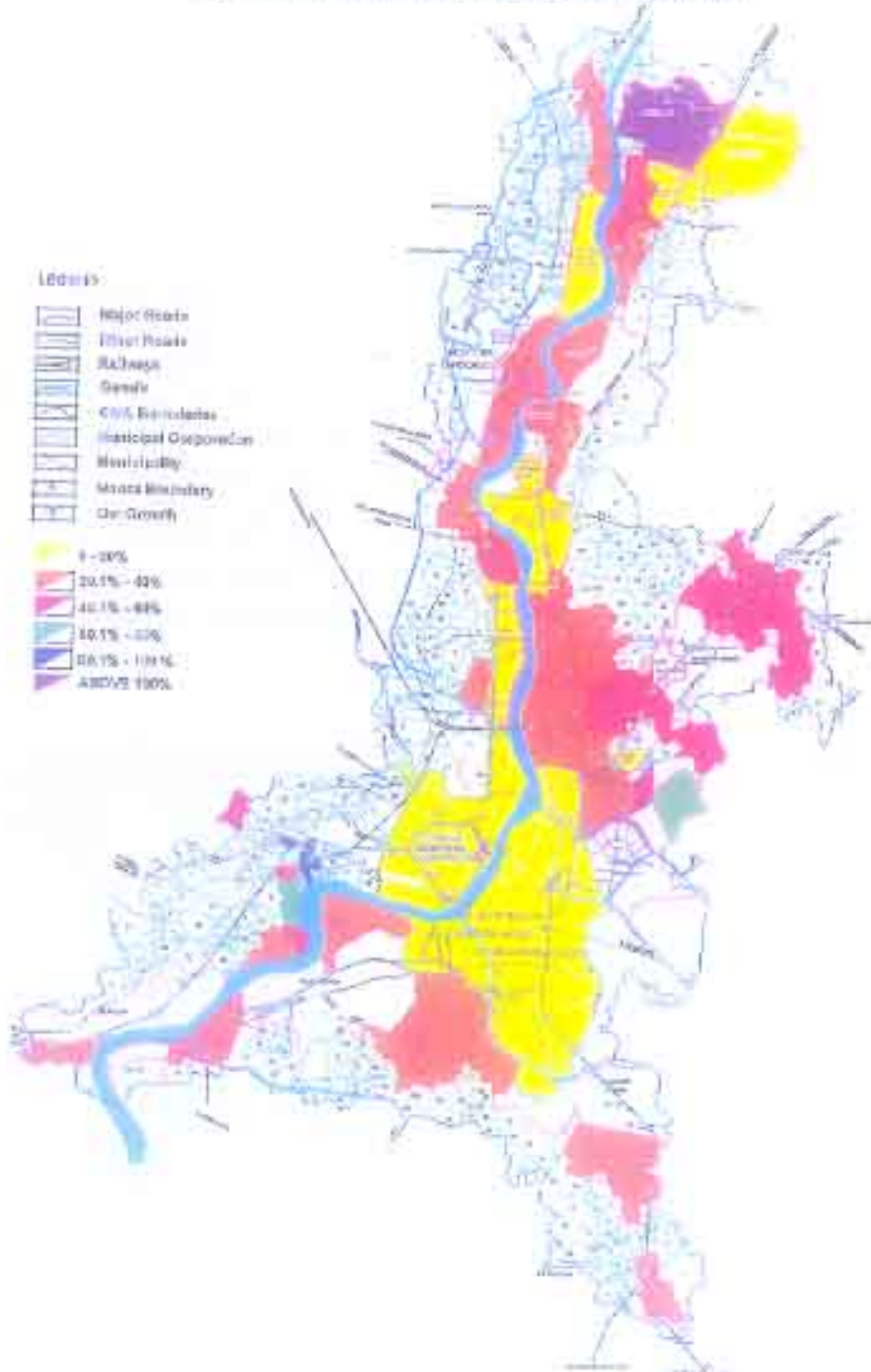


KOLKATA METROPOLITAN AREA
POPULATION GROWTH RATE PER DISTRICT DE 1971-2001









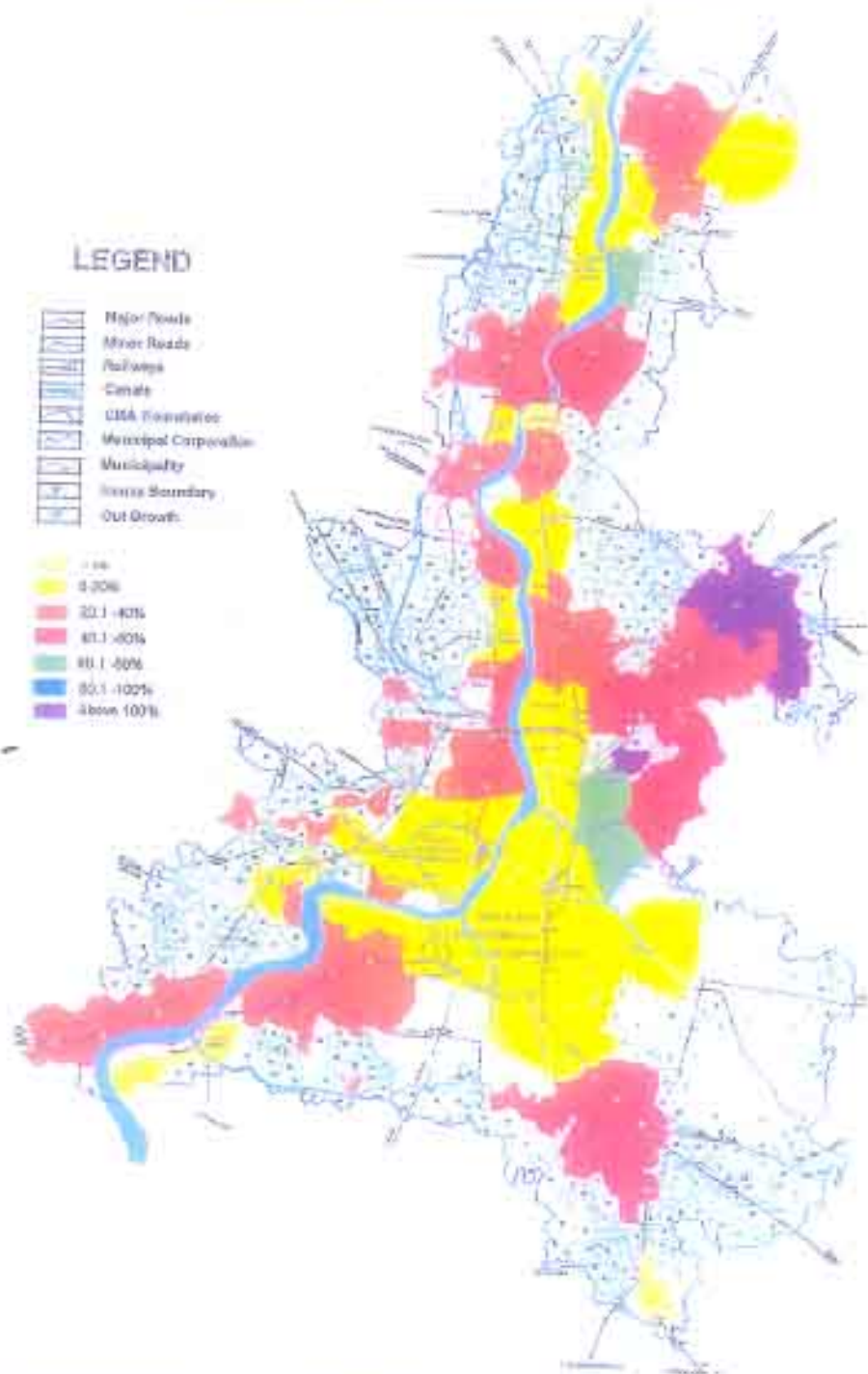
KOLKATA METROPOLITAN AREA

POPULATION GROWTH RATE PERCENTAGE (1991-2011)

LEGEND

-  Major Roads
-  Minor Roads
-  Railways
-  Canals
-  CMA Foundation
-  Municipal Corporation
-  Municipality
-  Area Boundary
-  Out Growth

-  0-20%
-  20.1-40%
-  40.1-60%
-  60.1-80%
-  80.1-100%
-  Above 100%



3.3


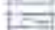



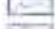






PERSPECTIVE PLAN OF K.M.A. - 2025
KOLKATA METROPOLITAN DEVELOPMENT AUTHORITY

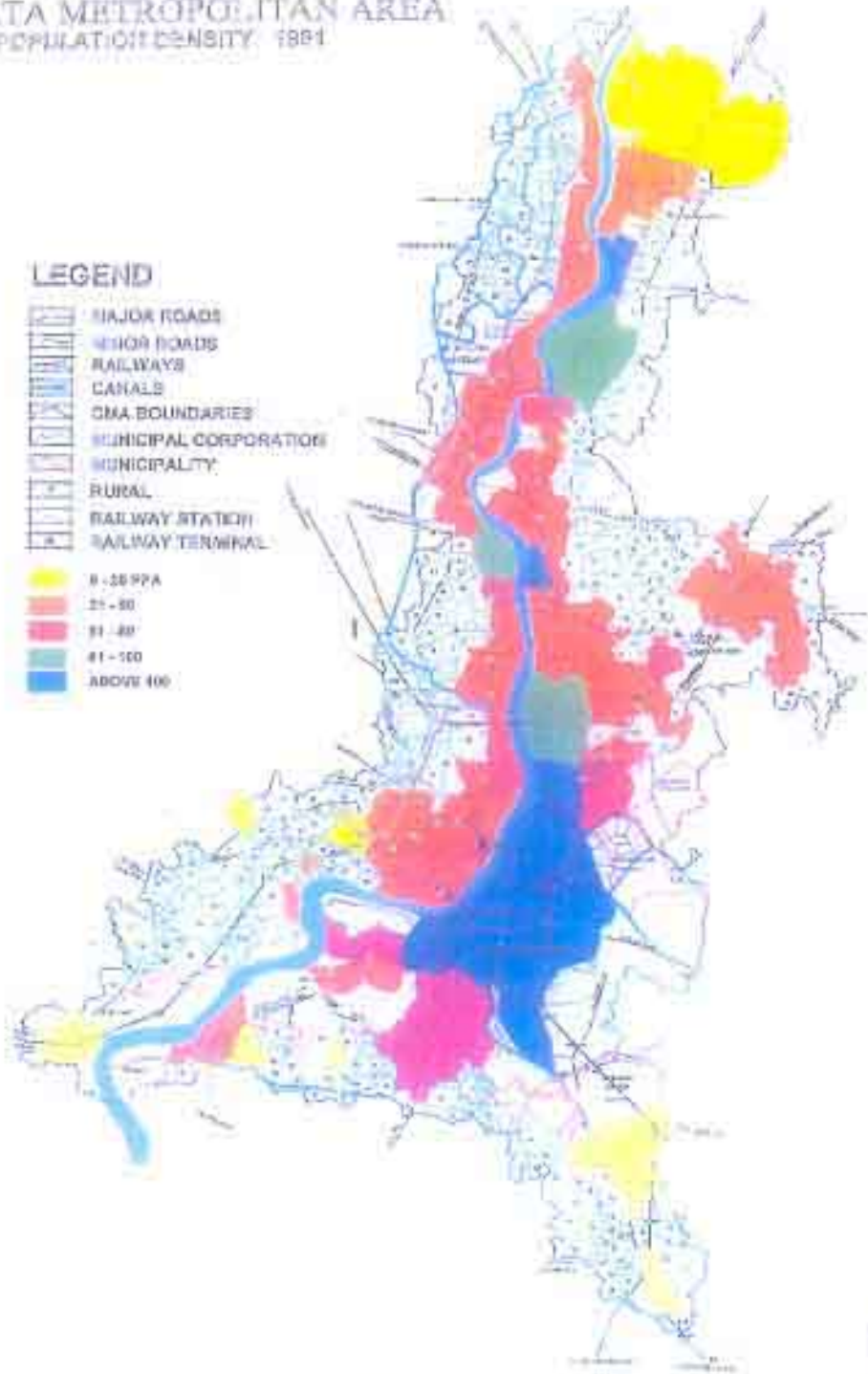


KOLKATA METROPOLITAN AREA
POPULATION DENSITY: 1981

LEGEND

-  MAJOR ROADS
-  MINOR ROADS
-  RAILWAYS
-  CANALS
-  CMA BOUNDARIES
-  MUNICIPAL CORPORATION
-  MUNICIPALITY
-  RURAL
-  RAILWAY STATION
-  RAILWAY TERMINAL

-  0 - 20 PPA
-  21 - 50
-  51 - 80
-  81 - 100
-  ABOVE 100








3.4

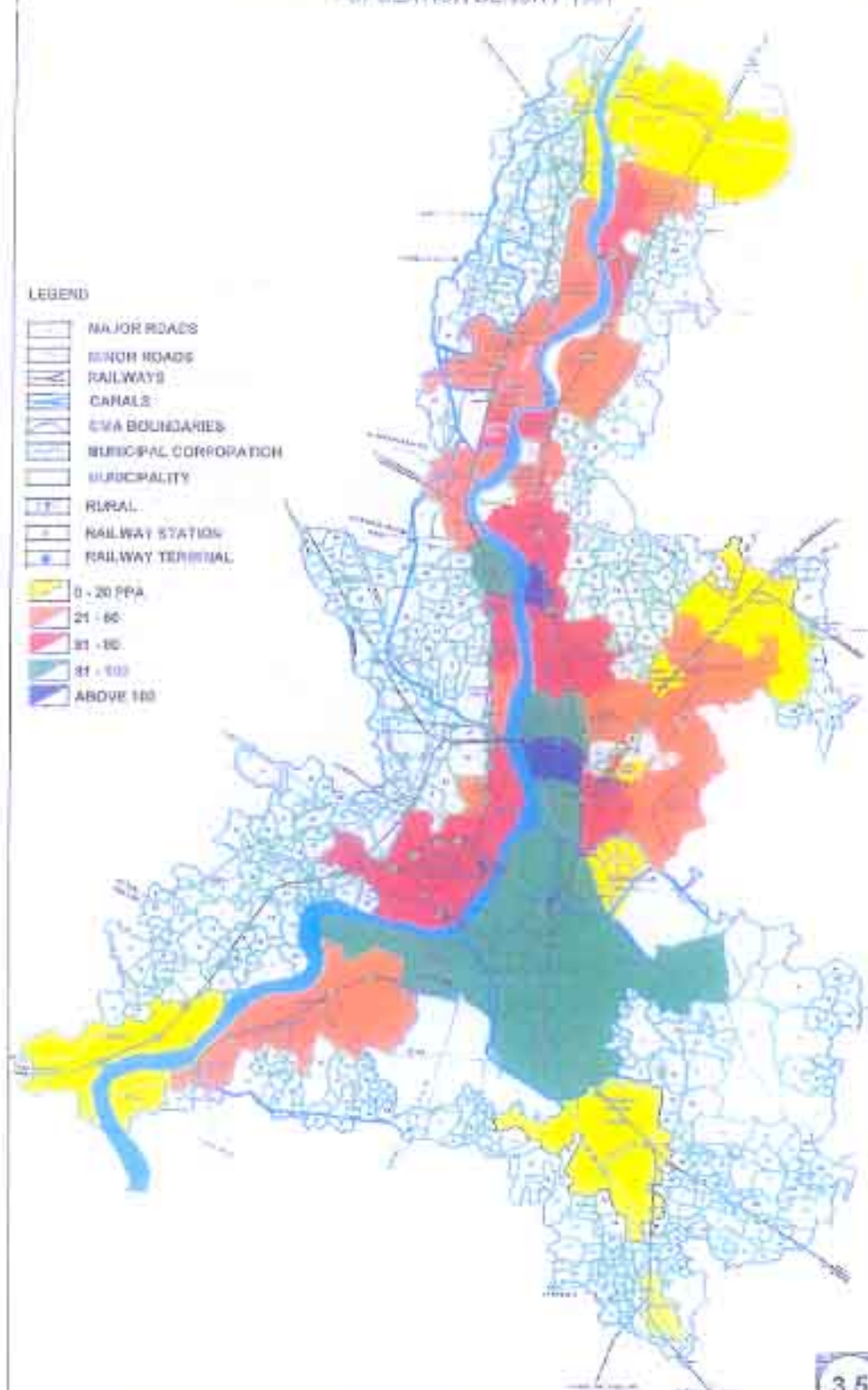


KOLKATA METROPOLITAN AREA POPULATION DENSITY 1991

LEGEND

-  MAJOR ROADS
-  MINOR ROADS
-  RAILWAYS
-  CANALS
-  CVA BOUNDARIES
-  MUNICIPAL CORPORATION
-  MUNICIPALITY
-  RURAL
-  RAILWAY STATION
-  RAILWAY TERMINAL

-  0 - 20 PPA
-  21 - 60
-  61 - 100
-  101 - 150
-  ABOVE 150



3.5

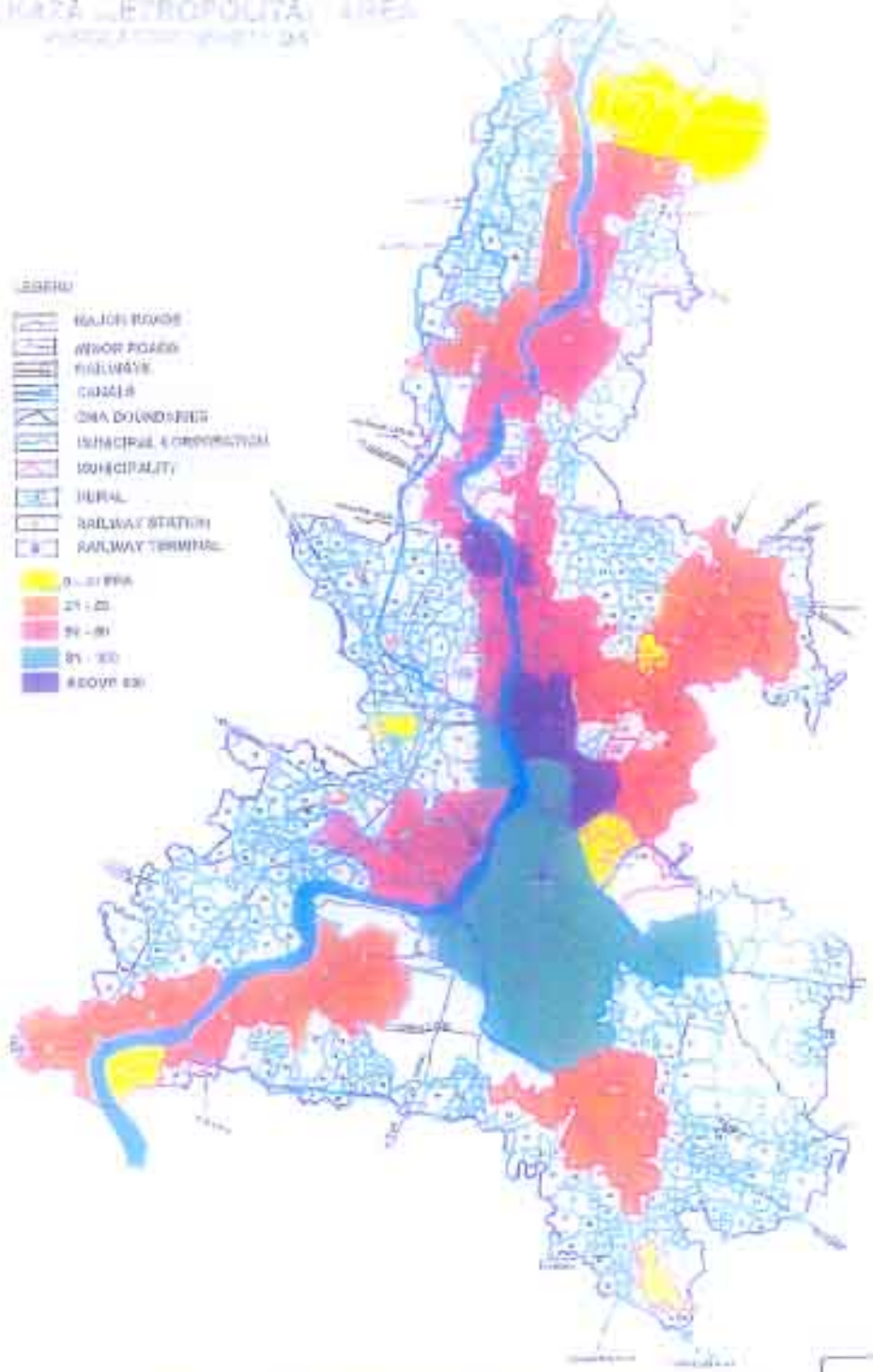


PERSPECTIVE PLAN OF K.M.A - 2025

KOLKATA METROPOLITAN DEVELOPMENT AUTHORITY

KOLKATA METROPOLITAN AREA

- LEGEND**
-  MAJOR ROADS
 -  MINOR ROADS
 -  RAILWAY
 -  CANALS
 -  CANA BOUNDRIES
 -  MUNICIPAL CORPORATION
 -  MUNICIPALITY
 -  RURAL
 -  RAILWAY STATION
 -  RAILWAY TERMINAL
 -  0 - 21 PPA
 -  21 - 30
 -  30 - 40
 -  40 - 50
 -  ABOVE 50



16



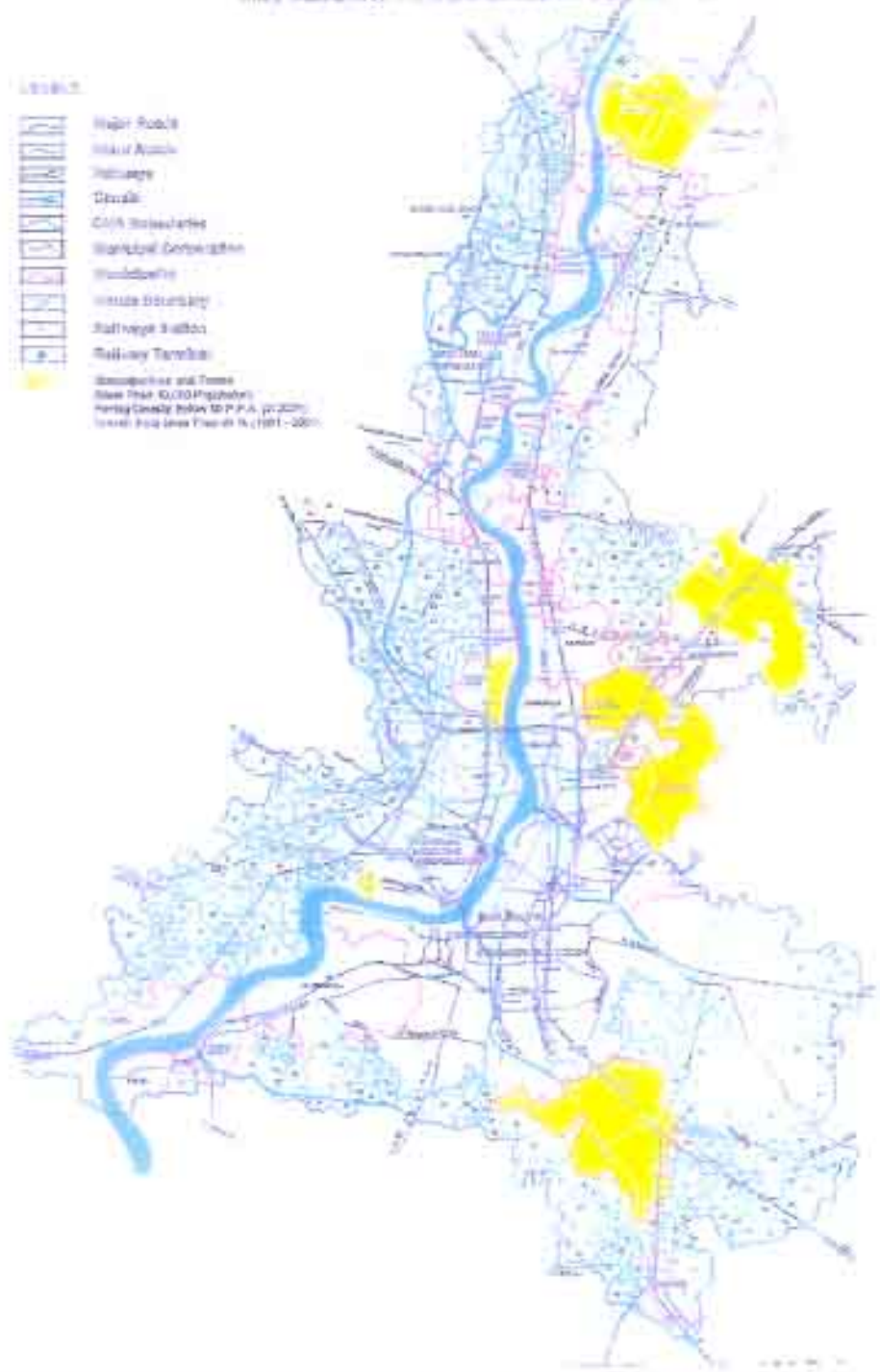

PERSPECTIVE PLAN OF K.M.A. - 2025
 KOLKATA METROPOLITAN DEVELOPMENT AUTHORITY

KOLKATA METROPOLITAN AREA

Planning, Development and Control of the City of Kolkata (1974) (Revised)
Control and Development of the City of Kolkata (1974) (Revised) (Amended) (1981-2001)

LEGEND

-  Major Roads
-  Minor Roads
-  Footways
-  Canals
-  C.A. Boundaries
-  Municipal Corporation
-  Municipalities
-  Ward Boundaries
-  Railway Station
-  Railway Terminus
-  Development and Town
-  New Town (C.O.P. Projects)
-  Heavy Industry (K.M.A. P.P.A. (1974))
-  Green Field Area (1981-2001)

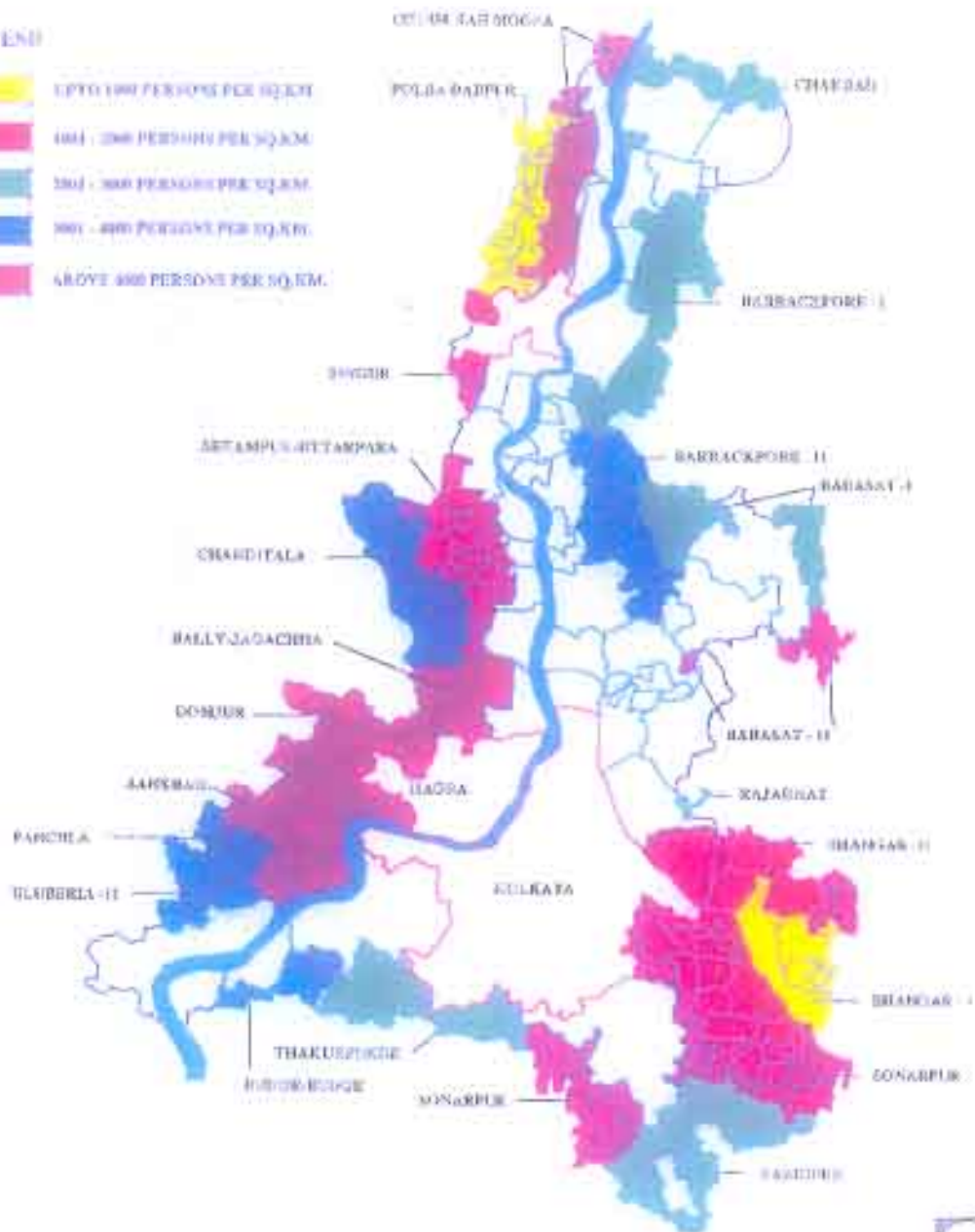
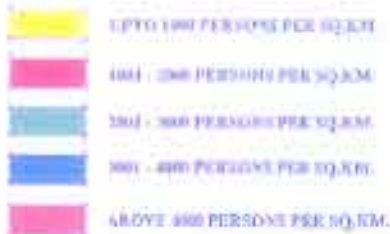


PERSPECTIVE PLAN OF K.M.A. - 2025
KOLKATA METROPOLITAN DEVELOPMENT AUTHORITY



DENSITY PATTERN - 2001 PANCHAYAT SAMITY AREA

LEGEND



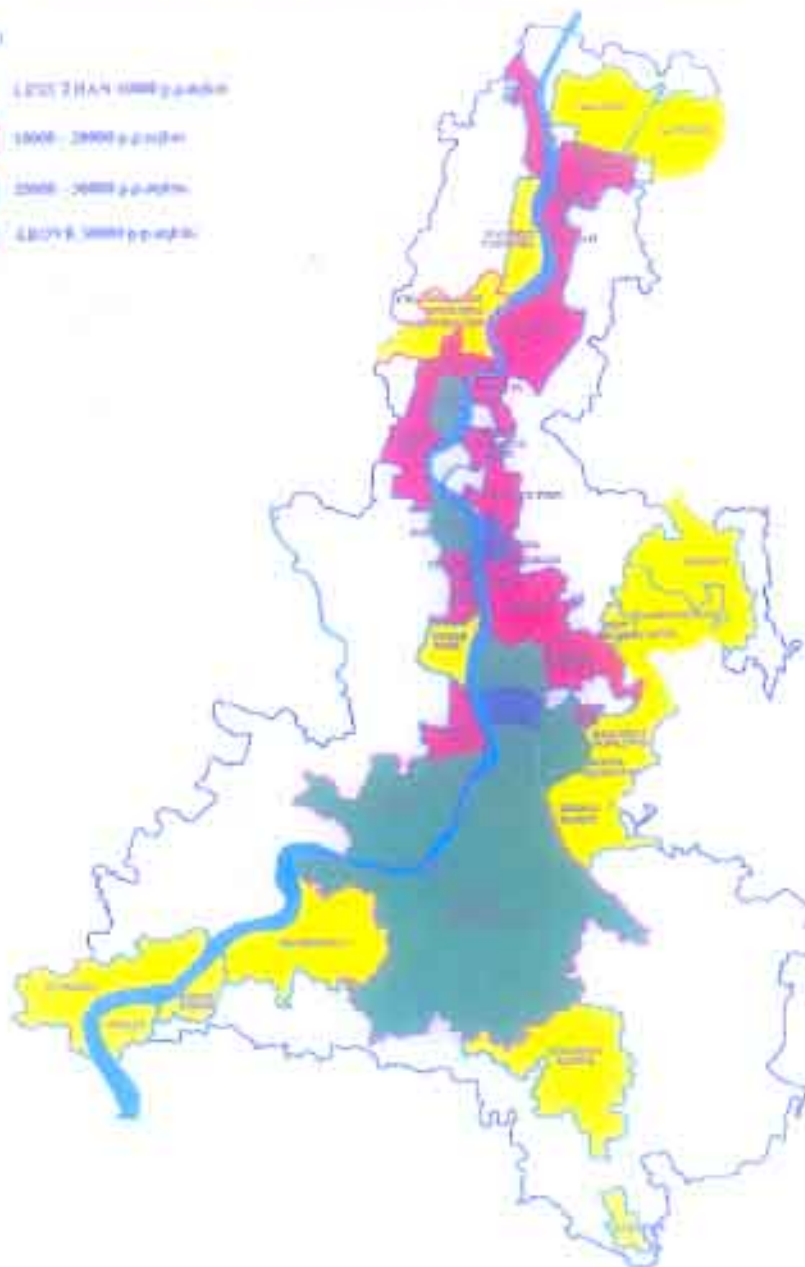
3:7



DENSITY PATTERN IN KMA 2001 MUNICIPAL CORPN. AND MUNICIPALITIES

LEGEND

- LESS THAN 1000 people
- 1000 - 2000 people
- 2000 - 3000 people
- LESS THAN 3000 people

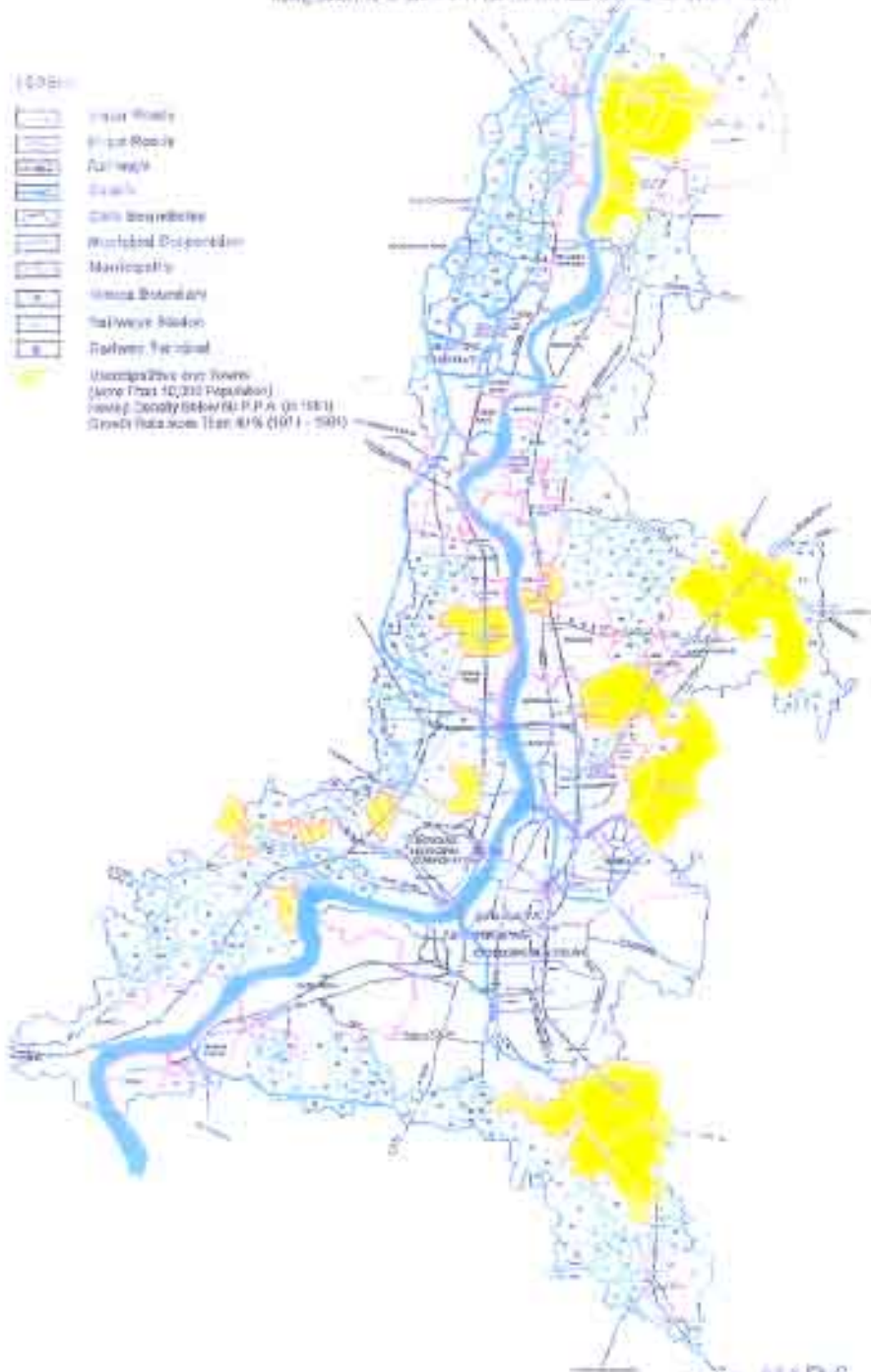


KOLKATA METROPOLITAN AREA

Population: 10,00,000
 Planning Capacity: 10,00,000 P.P.A. (1981) Growth Rate: 10% (1971-2001)

Legend

- Major Road
- Minor Road
- Railway
- Canal
- Canal Reservoir
- Municipal Corporation
- Municipality
- Urban Boundary
- Railway Station
- Railway Terminal
- Unincorporated town (Area that 10,00,000 Population having capacity below 10 P.P.A. in 1981) Growth Rate: 10% (1971-2001)



PERSPECTIVE PLAN OF K.M.A. - 2025
 KOLKATA METROPOLITAN DEVELOPMENT AUTHORITY

